

@healthmail.ie

Karina Hull

Access to Information Portfolio Meeting

28th September 2017

Background

- Launched in November 2014.
- Joint initiative of HSE, DOH and ICGP.
- Aim was to provide a secure email service which would allow clinicians to communicate patient identifiable information to colleagues in private and secondary care.
- First implementation for GPs and their support staff. Extended to Community Pharmacy April 2017.

@healthmail.ie

Implementation

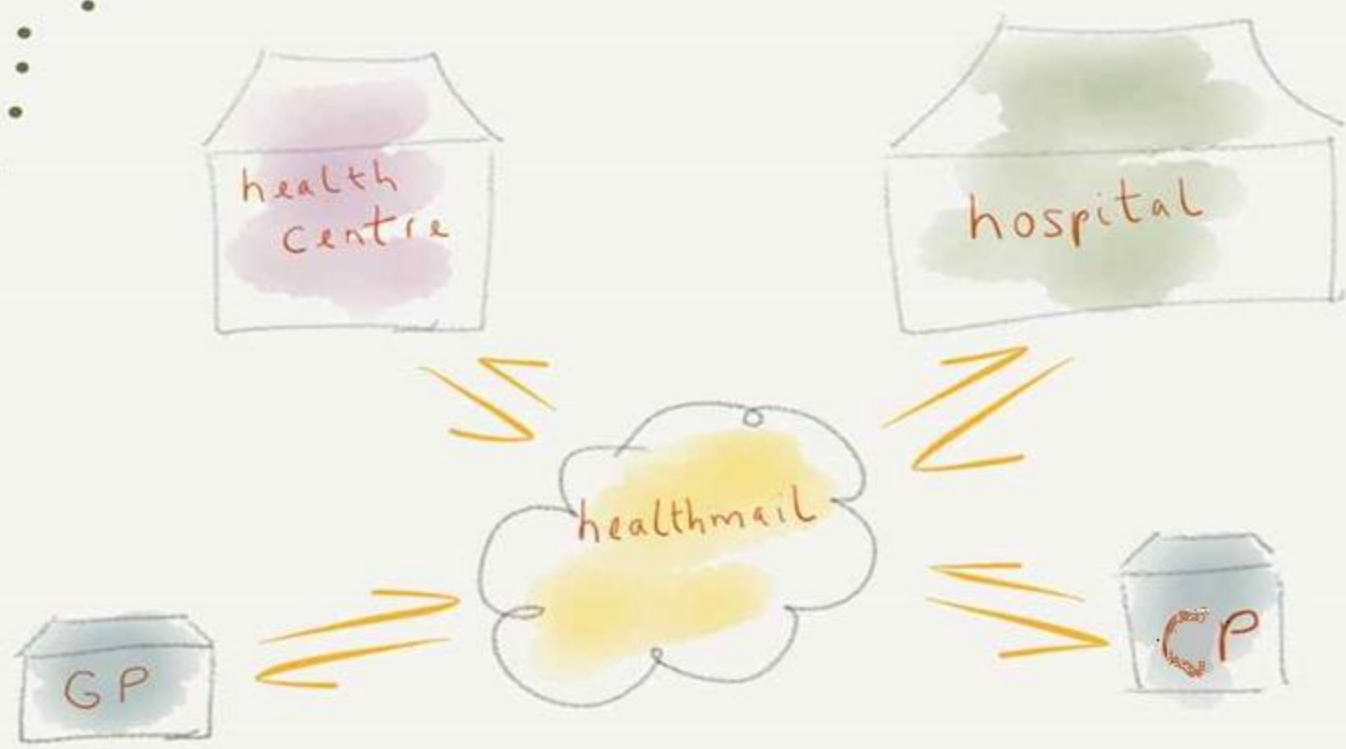
- Users are issued with an @healthmail.ie account
- All HSE and voluntary hospital email addresses are automatically connected to Healthmail.
- Number of other connected agencies.
- Possible to send images or documents as attachments
- Primarily accessed via a web interface using any standard browser.

@healthmail.ie

Security

- Private bounded network
- Defined number of connected agencies, secured using TLS (Transport Layer Security).
- Closed network, so no access from Gmail or Hotmail etc.
- Only trusted IP addresses can communicate.
- Ensured security and confidentiality of data transmitted.

@healthmail.ie



Current Status

- 2016 accounts, (1976 users, 40 practice accounts).
- Numbers increasing monthly.
- Engaging with additional user groups: Physios, Dentists, Nursing Homes.
- More users, more use cases identified.

@healthmail.ie

Connected Agencies

- All HSE Regions, @hse.ie
- AMNCH, Tallaght - @amnch.ie
- Beaumont Hospital, Dublin - @beaumont.ie
- Cappagh National Orthopaedic Hospital - @cappagh.ie
- Coombe Women & Infants University Hospital - @coombe.ie
- Mater Public, Dublin - @mater.ie
- Marymount University Hospital and Hospice, Cork - @marymount.ie
- Mercy Hospital, Cork - @muh.ie
- Milford Care Centre, Limerick - @milfordcarecentre.ie
- National Maternity Hospital, Holles Street - @nmh.ie
- National Rehabilitation Hospital - @nrh.ie
- Our Lady's Hospice, Harold's Cross, Dublin - @olh.ie
- Our Lady's Children's Hospital, Crumlin - @olhsc.ie and @olhsc.ie
- Rotunda Maternity Hospital, Dublin - @rotunda.ie
- South Infirmary Victoria University Hospital, Cork - @sivuh.ie
- St Francis Hospice, Dublin - @sfh.ie
- St James's Hospital, Dublin - @stjames.ie
- St John's Hospital, Limerick - @stjohnshospital.ie
- St Luke's Hospital, Rathgar, Dublin - @slh.ie
- St Vincent's Hospitals Group - @st-vincent.ie, @svuh.ie, @stmichaels.ie,
- @svhg.ie
- Temple Street Children's University Hospital - @cuh.ie
- Affidea Clinics - @affidea.com
- Aut Even Hospital, Kilkenny - @auteven.ie
- Bon Secours Hospital, Dublin and Tralee - @bonsecours.ie
- Mater Private Hospital, Dublin and Cork - @materprivate.ie
- St Vincent's Private Hospital, Dublin - @svph.ie
- Whitfield Clinic, Waterford - @whitfieldclinic.ie
- Central Remedial Clinic (Dublin, Limerick & Waterford) - @crc.ie
- Department of Health - @health.gov.ie
- Enable Ireland - @enableireland.ie
- Health Products Regulatory Authority - @hpra.ie
- Healthlink, National Messaging Broker - @healthlink.ie
- National Cancer Control Programme - @cancercontrol.ie
- National Screening Service - @[screeningservice.ie](https://www.screeningservice.ie)
- SouthDoc Out of Hours Coop - @southdoc.ie

@healthmail.ie

Purpose

- To keep patient information safe
- To facilitate information exchange
- To operate a useful service

@healthmail.ie

Plans

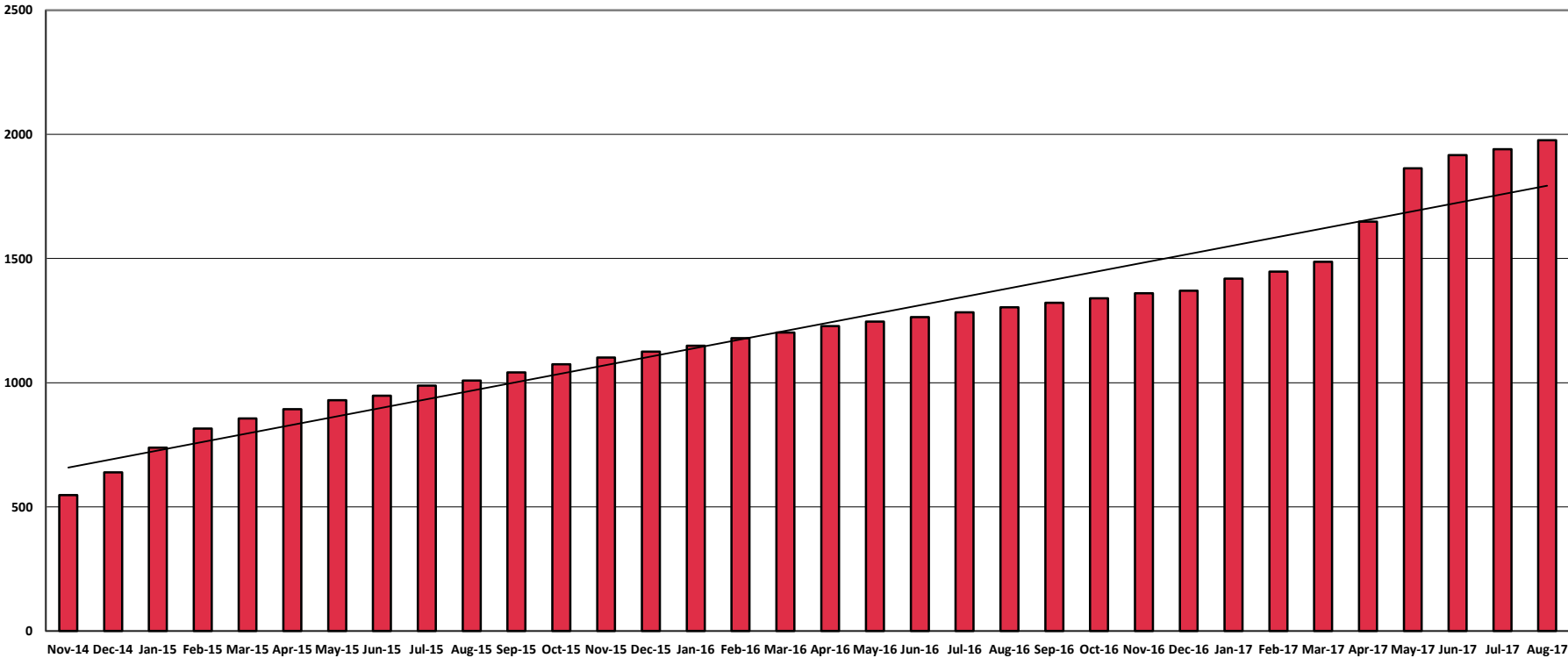
- Engage with users, promote service
- Engage with hospitals to email instead of fax
- Expansion to new user groups
- Integrate with GP software systems

@healthmail.ie



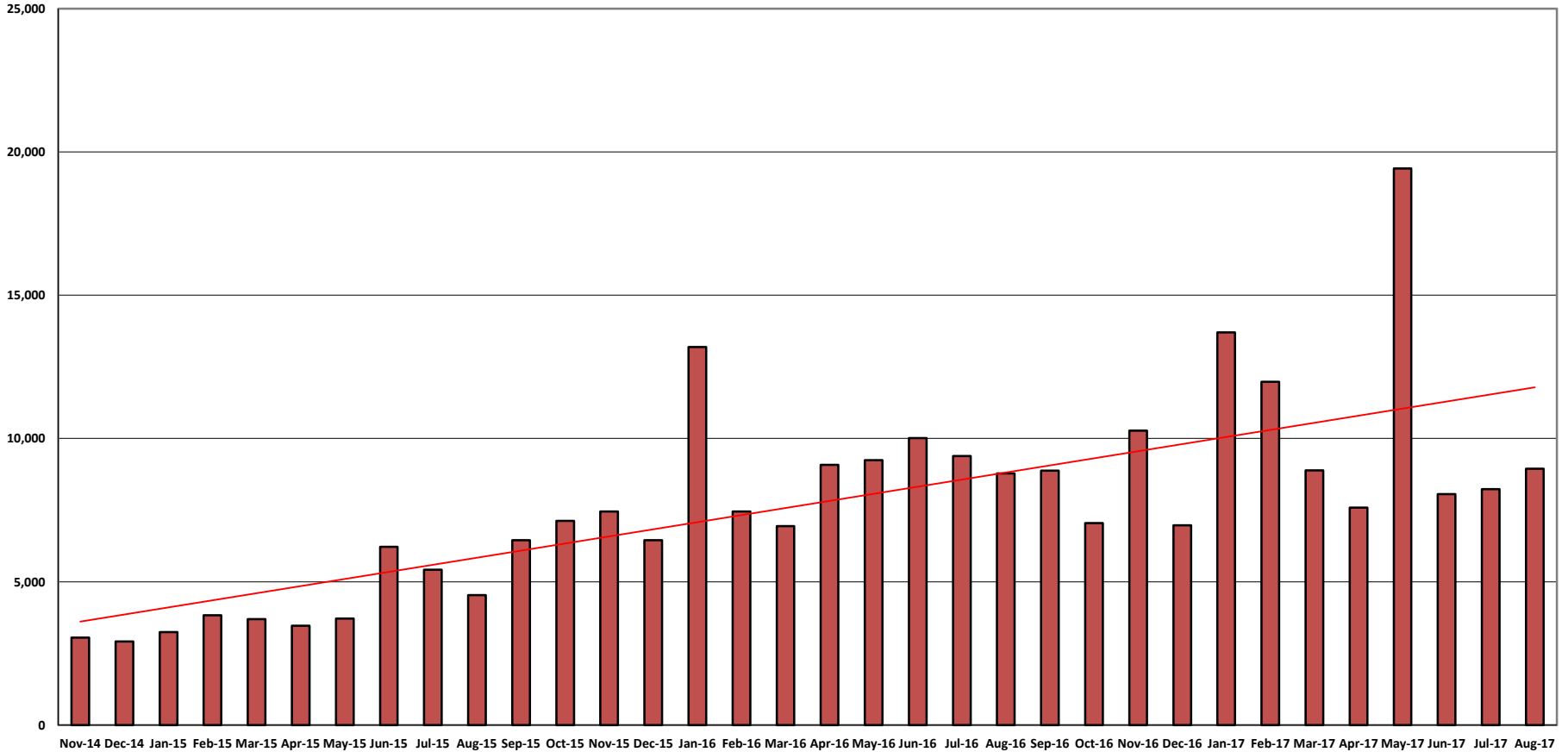
@healthmail.ie

User Stats



@healthmail.ie

Message Stats



@healthmail.ie

Further Information

www.healthmail.ie

<http://www.ehealthireland.ie/Access-to-Information/Healthmail-/>

@healthmail.ie