



Feidhmeannacht na Seirbhíse Sláinte
Health Service Executive

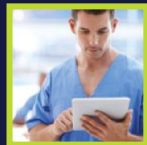


HIDs (Health Identifiers Programme) Update for A2I Staff Day

28th September 2017

Delivering eHealth Ireland

Office of the Chief Information Officer





Health Identifiers Update:

- Health Identifiers Programme
- IHI (Individual Health Identifier)
- Health Service Providers
 - Practitioners
 - Organisations
- Service Directory
 - identifiers, names and standard national value datasets for Practitioners, Organisations, Locations and Services
- What A2I is doing/and can do for HIDs
- What HIDs is doing /and can do for A2I
- Looking to the future

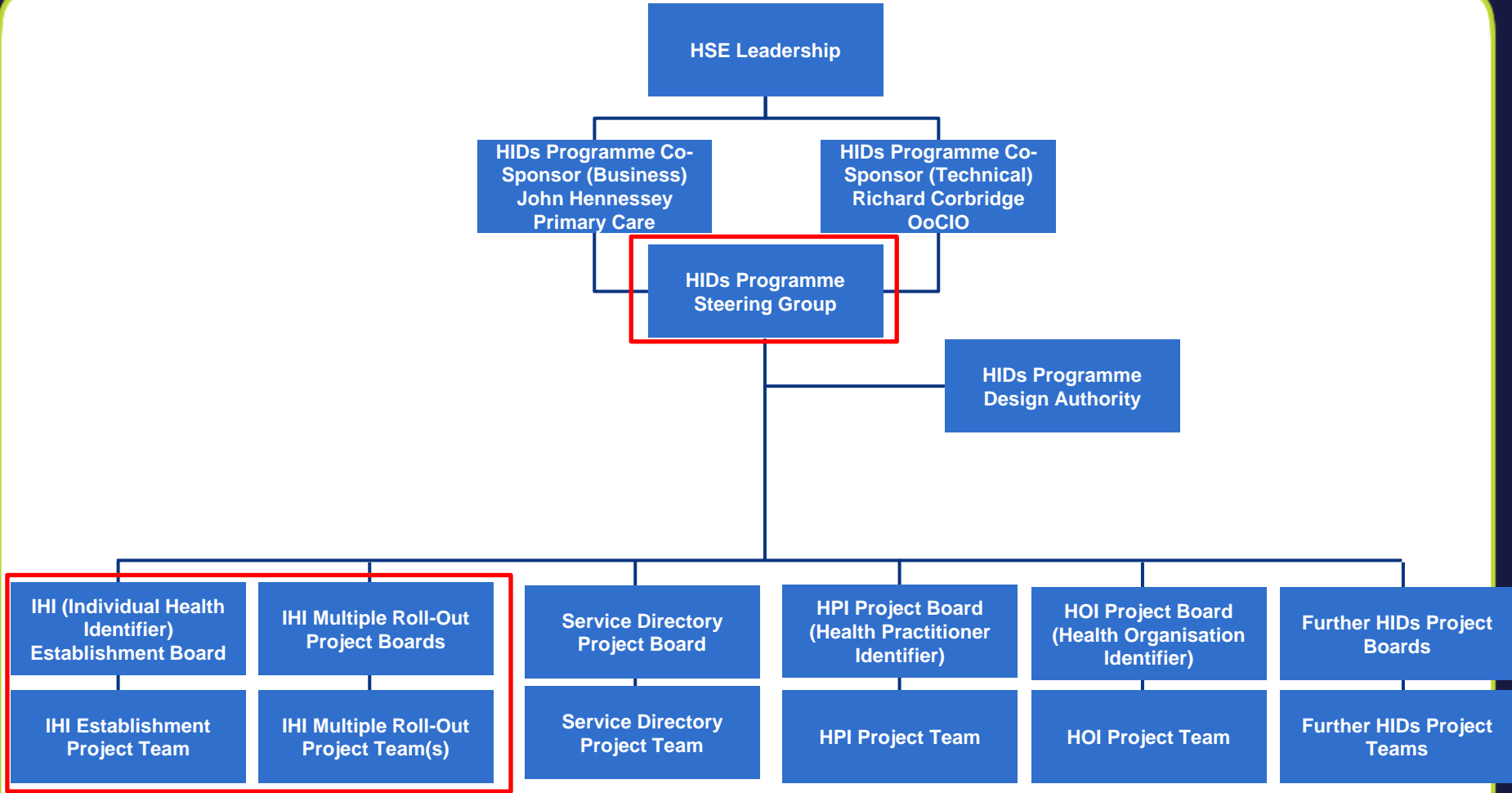


HIDs - Health Identifiers Programme

- HIDs – Programme Governance
- HIDs – Information Governance
- HIDs Programme Work streams
 - Current:
 - IHI
 - Service Directory
 - Future:
 - HSPs (Health Service Provider Identifiers)
 - Practitioners
 - Organisations
 - CIIX - Client Identifier Index (Record Locator Service)
 - Consent Register
 - Donor Register

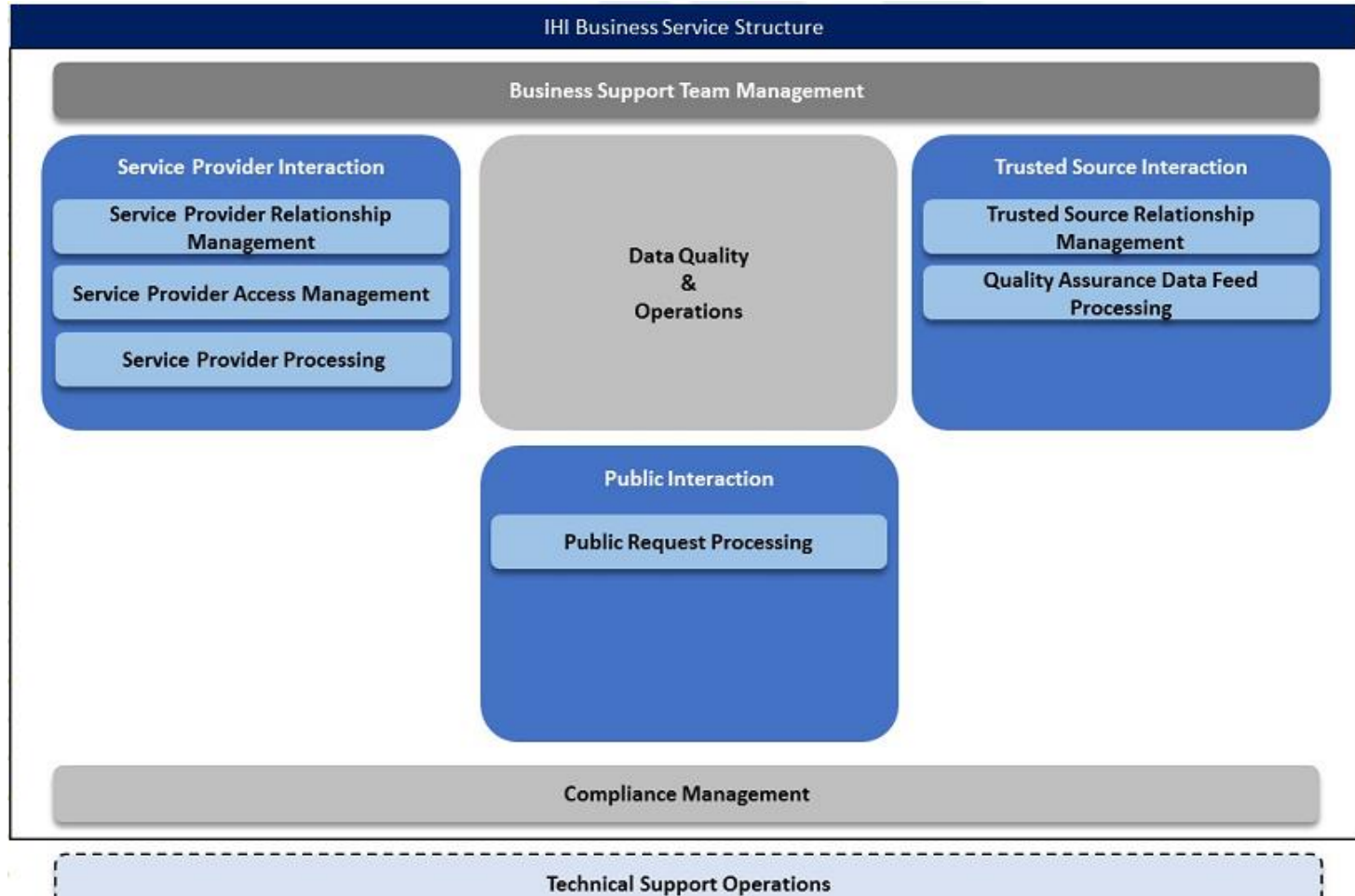


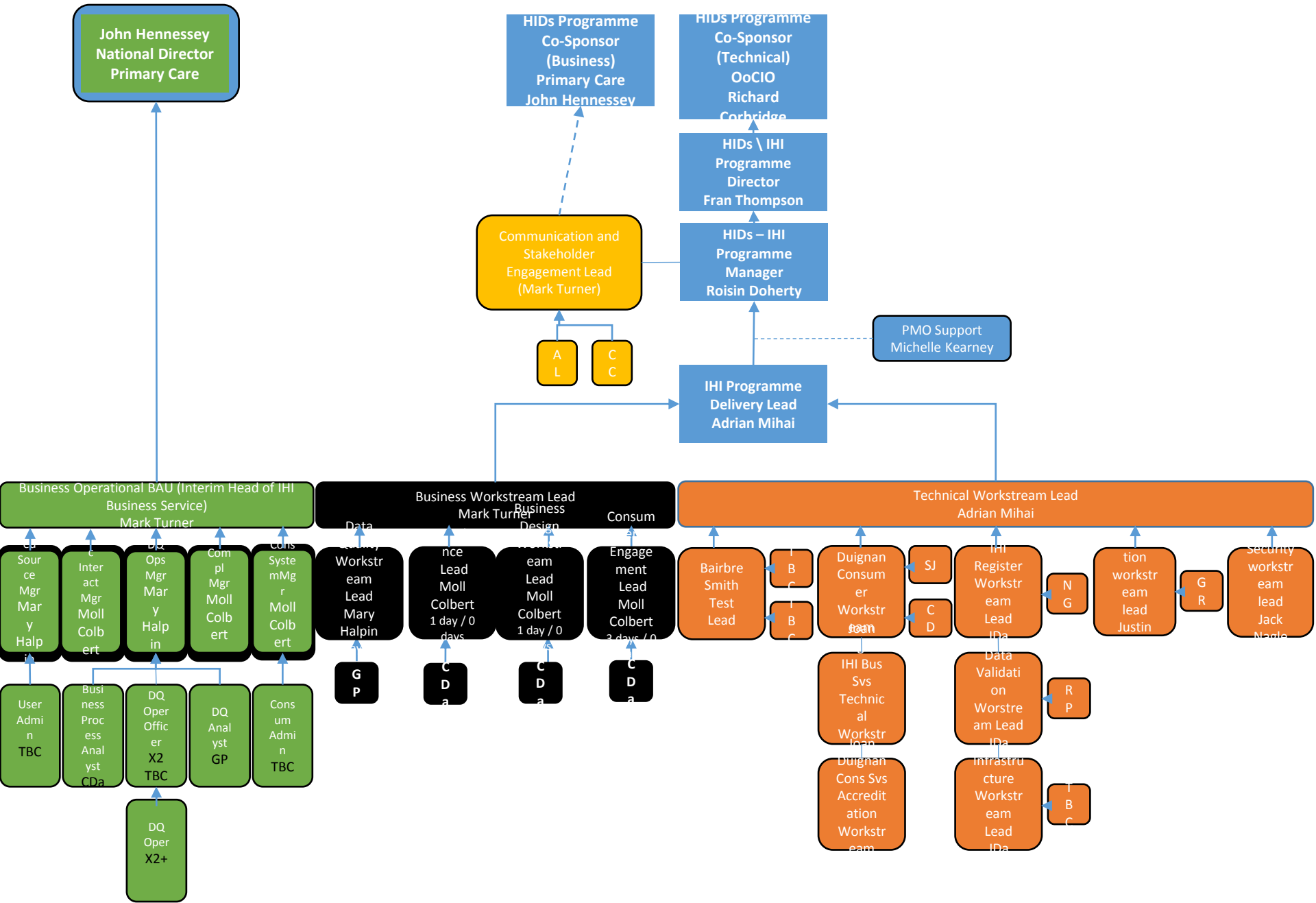
HIDs Programme Steering Group – IHI Governance





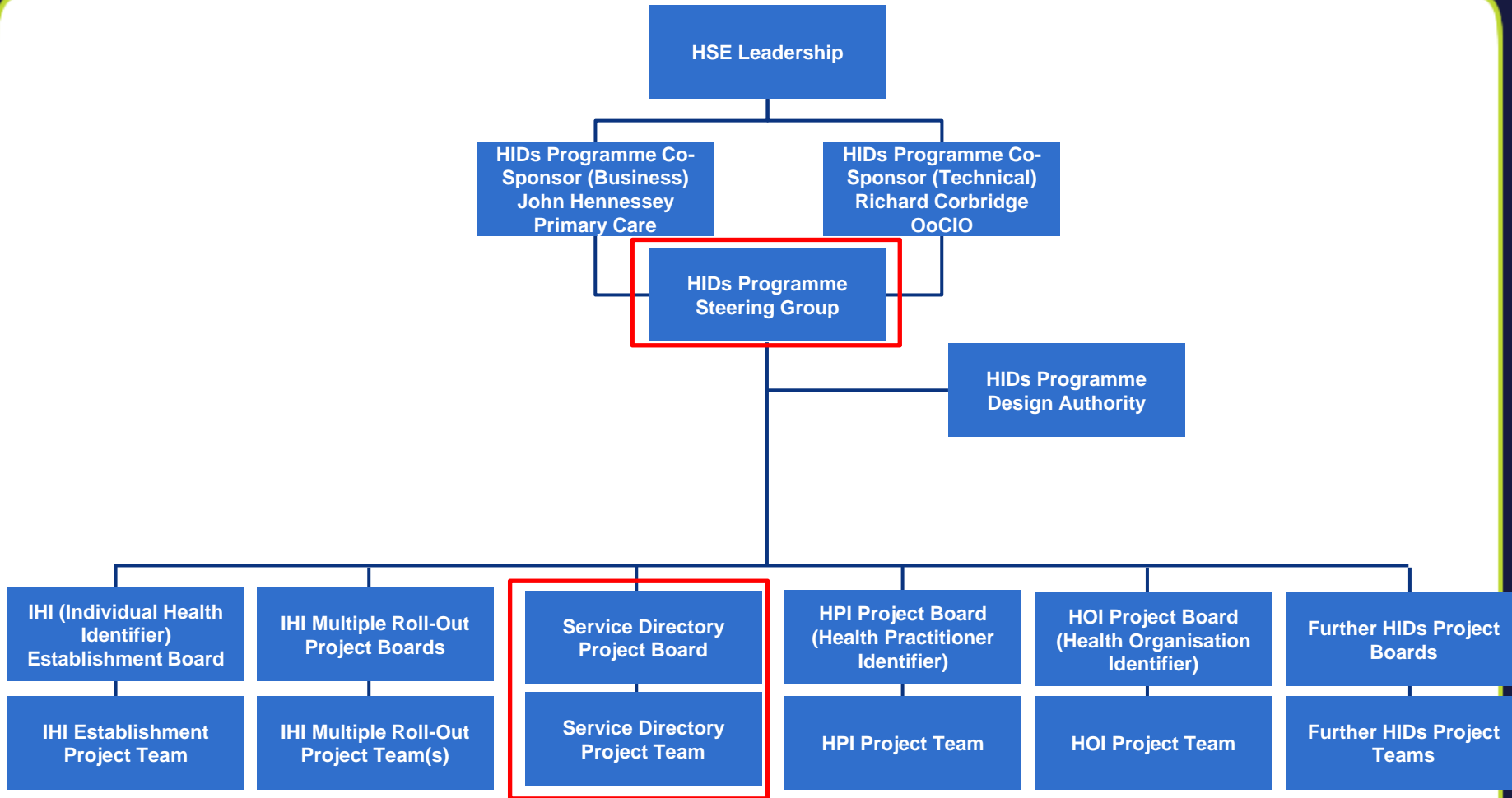
HIDs-IHI Business Service





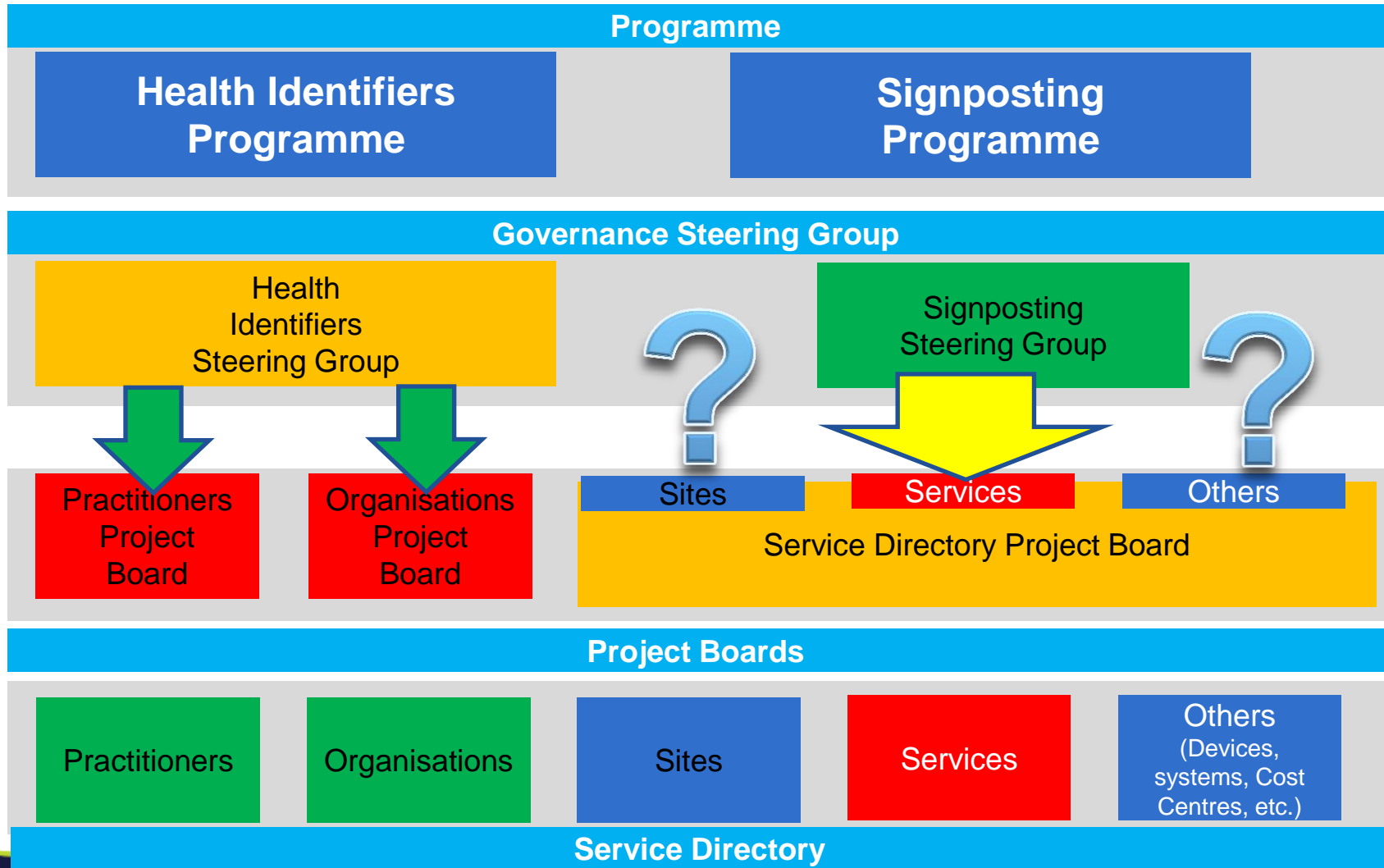
Opera
 Busin
 Progr
 Comm & Stakeholder
 Techn

HIDs Programme Steering Group – Service Directory Governance





Proposed Governance Model for Service Directory in context of HIDs and SignPosting Programmes





Service Directory Project Board Membership

- **Róisín Doherty**, Health Identifiers Programme Manager (Chairperson)
- **Dougie Beaton**, Management Lead, Knowledge Management (Co-Chairperson)
- **Howard Johnston**, Clinical Lead, Knowledge Management
- **Signposting Project – nominee from Aine Carroll/Joe Ryan/Damien McCallion**
- **Ben Cloney, HSE Digital (Communications)**

Additional Proposed Membership:

- ***A2I HealthLink** – nominee from Gemma Garvan
- *** Primary Care Contracts** – nominee from Pat O'Dowd

Future proposed membership

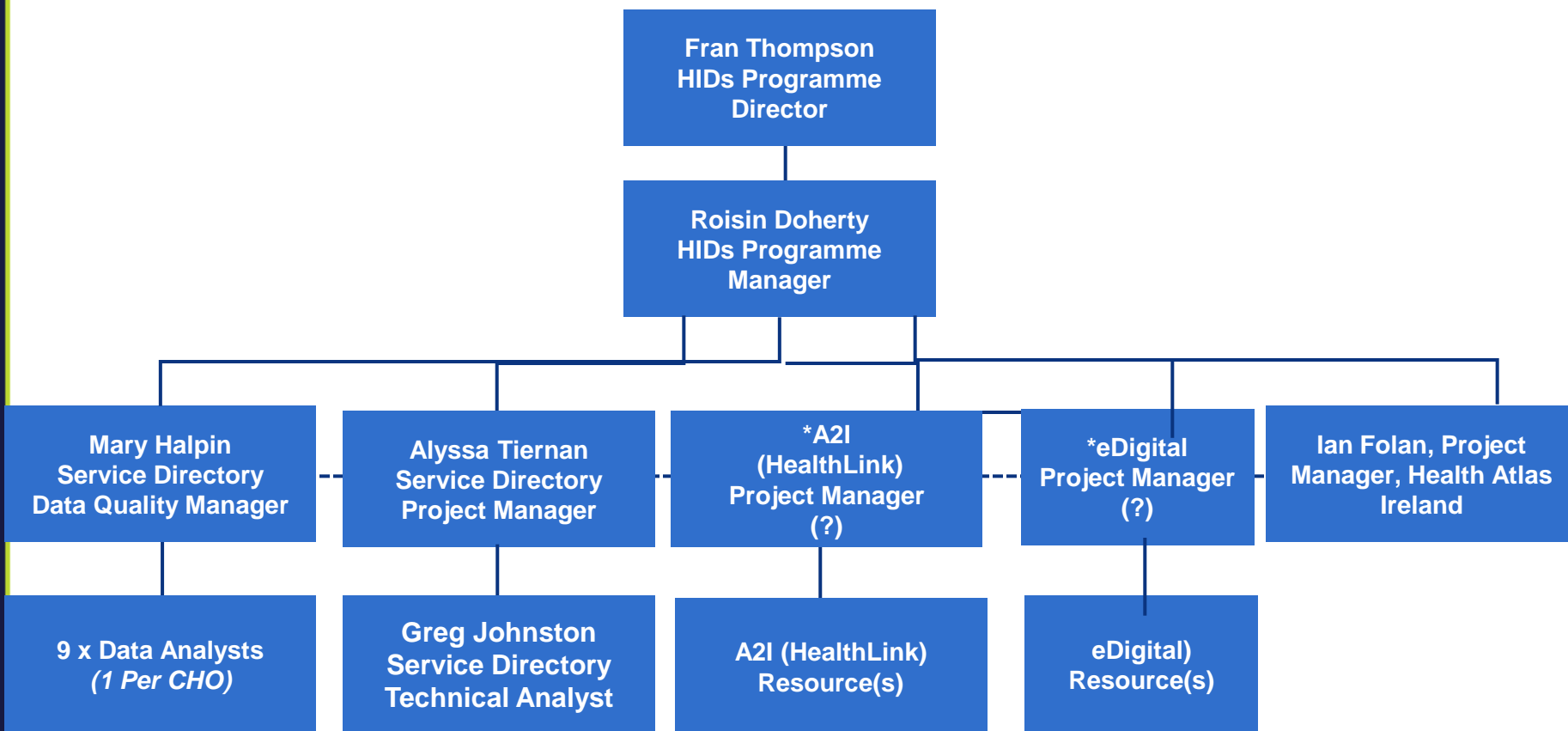
- **Health Business Services** – nominee from Jane Carolan (source for Practitioner, Organisations, Sites and Services)
- **HSE Estates** – nominee from Jane Carolan **Current proposed membership*
- **HSE Business Intelligence** – nominee from Richard Corbridge / Bernie Hyland
- **OoCIO Design Authority** – nominee from Peter Connolly
- **Finance** – nominee from Liam Woods
- **HSE Procurement** – nominee from John Swords
- **PCRS** – nominee from Anne Marie Hoey

Additional Attendees by Invitation:

- **Alyssa Tiernan**, Project Manager, HIDs Service Directory
- **Ian Folan**, Project Manager, Health Atlas Ireland
- **Mary Halpin**, Data Quality Manager - HIDs Programme



Service Directory Project Team Structure





IHI – The Individual Health Identifier

- IHI Introduction
- IHI Progress to date
- IHI to Health Service Providers Rollout Plan
- IHI Technical Overview.



IHI Introduction

- The Individual Health Identifier (IHI) is being introduced in our health services.
- The IHI supports patient safety by ensuring that the right person is identified and the correct information is associated with every person at the point of care.



IHI Introduction

- A central IHI Register contains IHI numbers for individuals who have used or are using a health or social care service in Ireland.
- Health systems will connect to this register to find the unique IHI number for each individual.



IHI Introduction

- The IHI number will be recorded on health records for the individual
- The number will look like this:

9	9	9	-	9	9	9	-	9	9	9	9
---	---	---	---	---	---	---	---	---	---	---	---

- The IHI record is a combination of the patient's IHI number and other personal information that is used to identify the patient.



IHI Dataset

- Surname

- Forename

NO CLINICAL DATA may be stored on register

- Date of birth

- Place of birth

- Sex (Gender)

- All former surnames

- Mother's surname and all former surnames

- Address (note will include Eircode where available)

- Nationality

- PPSN number

PPSN will **NOT** be returned to Health Service Providers

- Date of death (in the case of a deceased individual);

- Signature

- Photograph

- Any other particulars prescribed (excluding clinical information)





Format of the IHI Number

Format of the IHI Number

- The IHI No. will be in the format of:
 - A core 9 digit number, followed by;
 - A modulus 11 check digit for the core number, embedded within;
 - A GS1 GSRN Prefix (7 digits) with a respective GS1 GSRN check digit (1 digit) at the end of the whole number.

Format:

9999-999

[GS1 GSRN Prefix No.

-999-999-999

core IHI number with]

-9

[check -digit]

-9

[final GS1 check digit]

Example:

5393-014

[GS1 GSRN Prefix No.

-123-456-789

core IHI number with]

-1*

[check -digit]

-2*

[final GS1 check digit]

*checkdigits are not valid – demonstration only

An Algorithm for check digits with be provided



IHI Progress to date

IHI Register:

- IHI Register was populated in September 2016 with 6.7 million records – providing IHI s for residents of Ireland.
- The Technical Infrastructure is in place to allow Health Service Consumer Systems to FIND an IHI for their patients and clients.
- **Live IHI Health Service Systems:**
 - eReferrals has been live and operating since May 31st 2017 (avg. 700 transactions per day)
 - All 4 GP Practice Systems are now configured to store and display the IHI number and 22 volunteer practices have been seeded with IHI numbers for their GMS clients (30,000 GMS clients)



HIDs: IHI Summary - Contd

■ IHI Consumer System Rollout Plan for 2017/2018:

The consumer system roll out strategy for 2017/2018 breaks into 3 x parallel streams:

■ 1. Early adopters:

- eReferrals (complete and operational since May 31st 2017)
- LauraLynn Hospice projected Q3 2017
- Epilepsy EHR projected Q3 2017

■ 2. National Systems:

- NIMIS (Radiology), MN-CMS (Maternity and Newborn), MedLIS (Laboratory) and PCRS Schemes

*Projected for seeding with IHIs in Q4 2017&Q1 2018 and full integration with IHI in Q2 2018

■ 3. Hospital Patient Administration Systems:

- The Mater Hospital has volunteered as an initial roll-out Hospital site for IHI (projected to go live in Q1 2018).
- Technical Engagement is underway with the iPMS PAS team with a view to recommending an appropriate hospital site for consideration by the hospital groups.
- In addition, engagement is about to commence with the Beacon Hospital as a volunteer site.

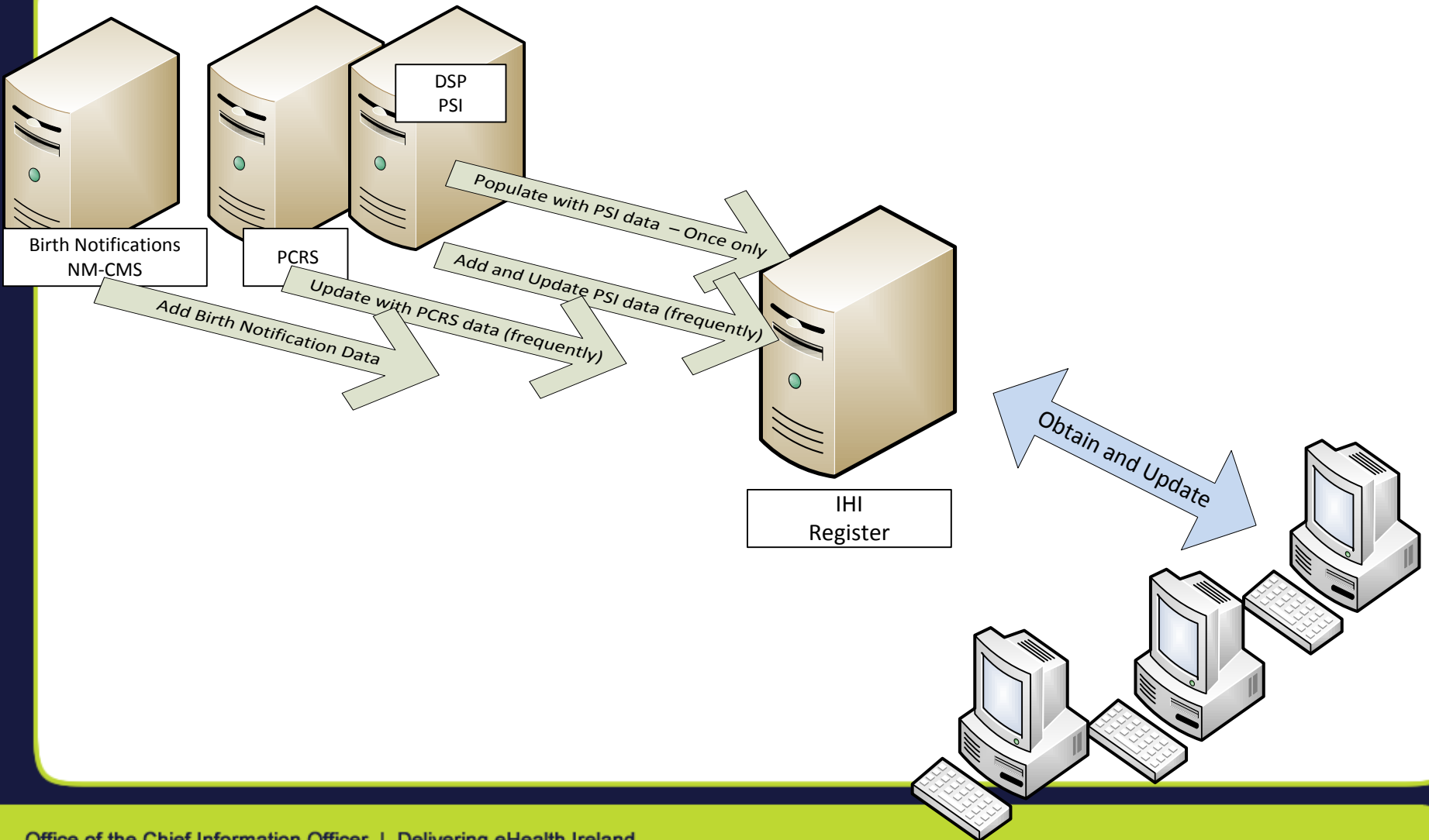


HIDs: IHI Summary - Contd

- **Candidate IHI Consumer Systems for Rollout Plan in 2017/2018:**
- The provision of the IHI for National Waiting Lists is about to commence.
- Approval has just been secured from the Health Identifiers Programme to proceed with the provision of the IHI for :
 - *Waiting Lists (NTPF etc.)*
 - *The National Hepatitis C Treatment Programme,*
 - *Immunisation (Schools Programme)*
 - *Beacon Hospital*
 - *St. John of Gods*
- The provision of IHI for prescribing is currently being assessed as a candidate service.



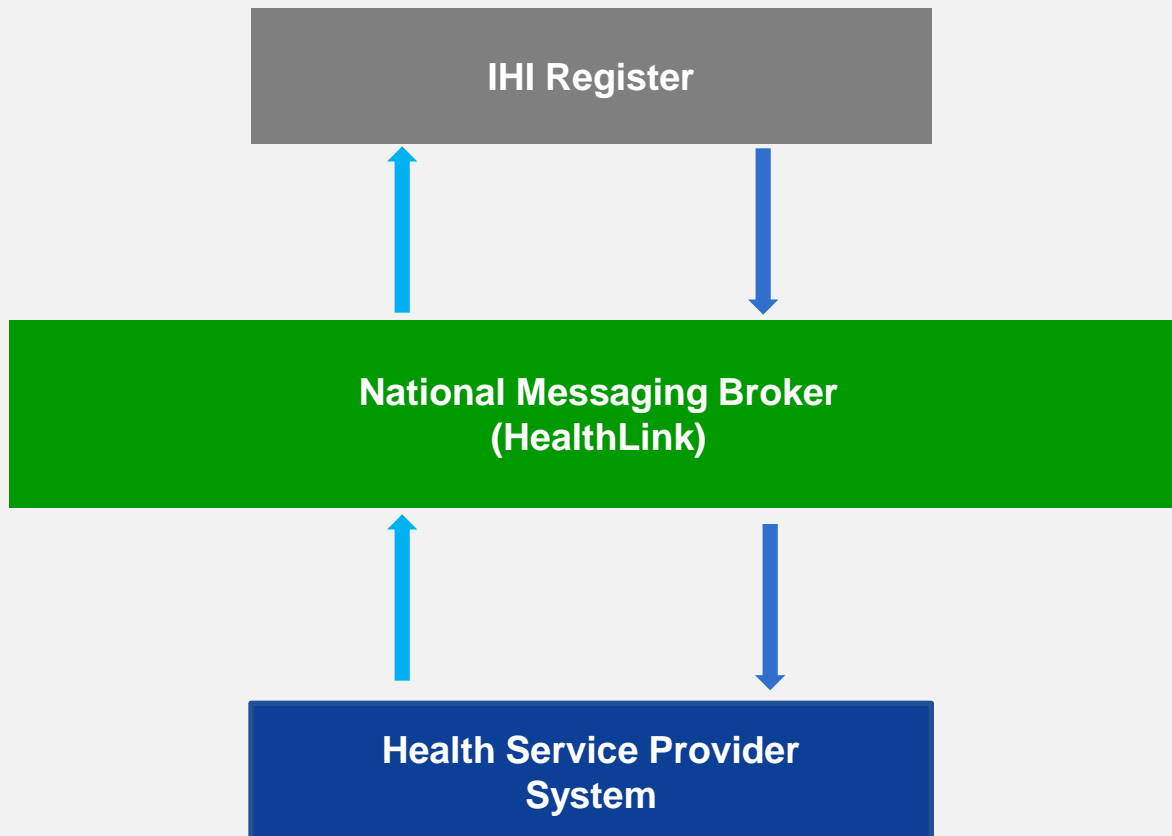
IHI Data Flow Overview





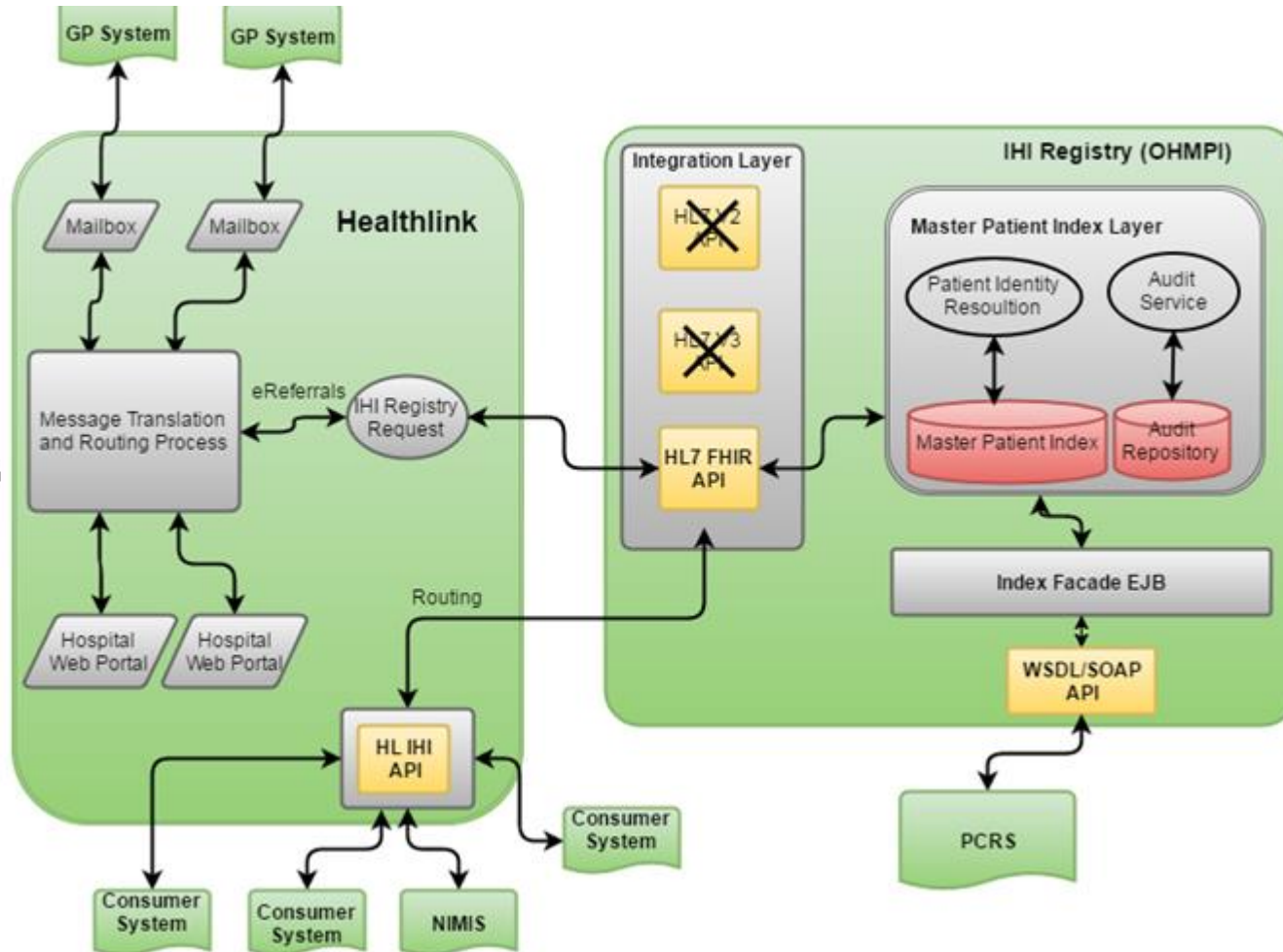
IHI Consumer System Roll-out

Mechanism of Delivery





Data flow diagram of Consumer System / IHI Register interface



kr



IHI Consumer System Roll-out Model

Scope of Delivery

Four levels of functional delivery:

- Level 1 (IHI No. available) ✓
 1. IHI No. Available in CS i.e. Seeded and potentially re-seeded periodically
- Level 2 (IHI: Dissemination / Harvesting)
 - 2.a IHI available in messaging (e.g. eReferral ✓, ePrescribing ✓ all A2I messaging tbd)
 - 2.b Consumer System 'harvests' IHI from messages and updates local index ✓.
- Level 3 (IHI: Interfacing)
 - 3.a Interface in place to find/verify an IHI No – Find ✓ (FHIR) ✓ (IHE)
 - 3.b interface in place to return an IHI record - or part thereof – Retrieve tbd
- Level 4 (IHI: consumer updates & requests for new IHI No's)
 - 4.a interface in place to notify IHI of a changes for name and address tbd
 - 4.b interface in place to request a new IHI number (new babies and non-residents) tbd

HIDs: IHI: Deliverables



Deliverable Name	Outlook Date	Actual Date	This Period	Last Period
Technical Delivery Phase 1 complete	23/05/16	23/05/16	Complete	Complete
Privacy Impact Assessment Published	22/07/16	22/07/16	Complete	Complete
Phase 1: IHI Register combined (PCRS with PSI data)	29/07/16	29/07/16	Complete	Complete
Phase 2: IHI Register with 4.7 million population records & allocated IHI Numbers	Q3/2016	22/07/16	Complete	Complete
Phase 3: IHI Register with 6.7 million population records & allocated IHI Numbers	09/12/16	25/11/16	Complete	Complete
Pre-Seeding Bulk Loading Interface available	Q4/2016	18/11/16	Complete	Complete
Test IHI for 2 x pilot GMS GPs	Q4/2016	20/12/16	Complete	Complete
Interim business service workflow tool	Q1/2017	07/04/17	Complete	Complete
Phase 1: De-couple Algorithm: Search Re-Configured and reload of PSI seed data	07/04/17	07/04/17	Complete	Complete
eReferrals Interface Live	31/05/17	31/05/17	Complete	Complete
4 x GP Practice Systems enabled for IHI (HealthOne, Socrates, Helix, CompleteGP)	Q2/2017	31/05/17	Complete	Complete
IHI for GMS GPs via PCRS interface live (volunteer GPs 4-14)	31/05/17	31/05/17	Complete	Complete
IHI seeded for GMS patients in 22 volunteer GP sites	30/06/17	14/06/17	Complete	Complete
HSE Internal Audit IHI Security Assessment	Q2/2017	23/06/17	Complete	Complete
IHI available in eReferrals for Hospitals and GPs	26/06/17	28/06/17	Complete	Complete
Phase 2: De-couple Algorithm: Data Load Re-Configured	Q1/2018		Amber	Green
IHI-DSP PSI Maintenance Feed Operational	Q1/2018		Amber	Amber
Consumer System 5 Year (2018-2023) Roll-out Strategy	Q1/2018		Amber	Amber
IHI seeded for MedLIS (Labs)	Q4/2017		Green	
IHI seeded for MN-CMS (Maternity)	Q4/2017		Green	
IHI seeded for PCRS (Schemes)	Q1/2018		Green	
IHI seeded for NIMIS (Radiology)	Q1/2018		Green	
GP (Interface for Socrates volunteer GP Practice)	Q2/2018		Green	Green
GP (Interface for HealthOne volunteer GP Practice)	Q2/2018		Green	Green
IHE Interface Available	Q2/2018		Green	
IHI Interface for MedLIS (Labs)	Q2/2018		Green	
IHI Interface for MN-CMS (Maternity)	Q2/2018		Green	
IHI Interface for PCRS (Schemes)	Q2/2018		Green	
IHI Interface for NIMIS (Radiology)	Q2/2018		Green	



For more information on the IHI contact the IHI Service:

Email: ihi@ehealthireland.ie

www.ehealthireland.ie/IHI

The IHI is part of a programme of investment in healthcare technology from eHealth Ireland and the HSE.



Health Service Providers

- Health Service Providers
 - Practitioner
 - A unique identifier for practitioners
 - Will require sources of truth from 'Registrars' for Health Service Practitioners
 - Medical Council, Nursing Board, Coru etc.
 - Self-updating by Practitioners.
 - Organisation
 - A unique identifier for organisations
 - Will require sources of truth from 'Registrars' for Health Service Organisations
 - HiQA, HSE (sections 38/39 etc.)
 - Self-updating by Organisations.
- HIDs: HSP Operator: Information Governance, Data Quality etc.
- A2I: Authentication, Messaging channels, Portals etc.

HSE Service Directory

– foundation for HSP registers



What is the HSE Services Directory?

- The HSE Services Directory stores, maintains and publishes **standard codes** and **identifiers** for health related **entities** (i.e. Practitioners, Organisations, Services, Sites/Locations (Devices)).
- The Service Directory Database effectively has 2 main functions:
 - From a business perspective - it provides the most up-to-date information in relation to health* service sites/locations, providers (practitioners & organisations) and services
(*additional non-health classified sites, providers and services are also available)
 - From a technical perspective - the service directory allows ICT systems to integrate with each other on a technical level by using standard unique identifiers for health service practitioners, organisations, sites and services and to make this information accessible via messaging, data extracts or visually via GUI interfaces inclusive of geographical mapping.



Atlas Home



Health Atlas Ireland

Supports the quest for better health for patients, their families & the public by exploiting the quality assurance, health mapping & research potential of available data

NEWS - Census 2016 data now available by health service areas in Atlas Finder. HP deprivation and small area data to follow later this month.

Finder

Available to all Atlas users



Atlas Finder

- Find an address or service site - and the Eircode
- Profile the demography of catchment areas
- Map sites and boundaries, show population density or deprivation

Username & password required to access the following

Health Service Data



Hospital Emergency Care



Hospital KPIs (CompStat)



Community Healthcare

NQAIS Hospital

National Quality Assurance & Improvement System



Acute Coronary Synd



Endoscopy



Radiology



Acute Medicine



Histopathology



Surgery - All



IRIS



Hospital Mortality



Clinical

Emergency



Aero-Medical



E Zone

Analysers



Atlas Analyser



Resource Analyser



Smap

Directories



Geo Reference



Service Directory



Service Lists



Estate Directory



Find your nearest hospital health centre, GP and more.

Share:

Health Atlas helps you to find essential health services on a map, General Practitioners, GPs, Family Doctors, Pharmacists, Dentists, Hospitals. It also provides contact phone numbers. Type your address in the box below. The Atlas will search automatically - choose an address from the search results. A map of your street will appear.

[Search all Health Services](#)

[Services by Home Address](#)

Type your address in the box below and view a range of address matches. Click on the correct address to see services near your home.

Use the arrows to the left of the map to zoom in or out and see more services.

[Services in Your County](#)

Select County

[Type of Health Service](#)

<input type="checkbox"/> All Services	<input type="checkbox"/> Dental Practice
<input type="checkbox"/> GP/Family Doctor	<input type="checkbox"/> Health Centres
<input type="checkbox"/> Hospitals	<input type="checkbox"/> Nursing Homes
<input type="checkbox"/> Pharmacy	<input type="checkbox"/> GP Out Of Hours



Services by Home Address

Type your address in the box below and view a range of address matches. Click on the correct address to see services near your home.

Use the arrows to the left of the map to zoom in or out and see more services.

Services in Your County

Type of Health Service

- | | |
|---|--|
| <input type="checkbox"/> All Services | <input type="checkbox"/> Dental Practice |
| <input type="checkbox"/> GP/Family Doctor | <input type="checkbox"/> Health Centres |
| <input type="checkbox"/> Hospitals | <input type="checkbox"/> Nursing Homes |
| <input type="checkbox"/> Pharmacy | <input type="checkbox"/> GP Out Of Hours |



Signposting Programme – Key Objectives

- Overall objective is to make it easier for citizens to access HSE services and be directed in a way to make response quicker and more appropriate to their condition
- Fundamentally, this promotes and supports access to services in the community and looks to reduce to presentations to the traditional channels (999/ ED) into the Hospital Group system
- Signposting looks to adopt a systemic view and draw on learnings from NHS experience with 111 service (Urgent but non-emergency)
- It will also look to leverage the work of existing programmes to ensure there is no duplication of effort
- The proposed approach is using data-driven Lean method to reduce complexity and bring services closer to the user

HSE Service Directory

– foundation for HSP registers & Health service information



The Service Directory provides a repository of current, up-to-date, quality assured and verified codes, identifiers and data i.e. a reliable ‘source of truth’ for data relating to the following:

- Practitioners: (unique identifier – GS1 GSRN (as per NHS))
 - **Currently:** General Practitioners, Anaesthesiologists, Obstetricians, Paediatric Consultants, Psychiatrists, Radiologists, Surgeons etc.
 - **Currently Planned:** Nurses, Pharmacists, Dentists, N.Ireland General Practitioners
 - **Future:** All medical practitioners for e.g. Radiographers, Social Workers, Physiotherapist, Lab scientists and non-medical practitioners such as medical administration staff etc.
- Organisations: (unique identifier – GS1 GLN (as per NHS))
 - **Currently:** Hospitals (public), General Practices, Nursing Homes, Pharmacies, Hospital Groups, CHO’s, Primary Care Teams, Out of Hours GPs
 - **Currently Planned:** Mental Health Service Providers, Hospitals (Private), N.Ireland GP Practices and Hospitals
 - **Future:** All Health Service Organisations including HSE, Agency 38/39 Health Insurance Organisations, Health Insurance Organisations, Primary Care Teams, Private Hospitals etc..
- Sites / Locations: (unique identifier – GS1 GLN (as per NHS))
 - **Currently:** Hospitals sites (public), Health Centres, General Practices, Pharmacies, Supply Warehouses.
 - **Currently Planned:** Locations providing Mental Health Services, Out of Hours GPs
 - **Future:** All Health Service Locations providing, supporting or administering a Health Service e.g. Hospitals, Clinics (public and private) Laboratories, Ambulance Bases, Headquarters etc.
- Services: (unique identifier – GS1 GTIN (as per NHS))
 - **Currently:** General Practice,
 - **Currently Planned:** Mental Health Services, Dementia, Out of Hours GPs
 - **Future:** All Health Services e.g. Dental Services, Physiotherapy, Counselling, Chiropody, Immunisations, Cancer Screening, Disability Services, Fair Deal etc.



- The Service Directory provides a repository of current, up-to-date, quality assured and verified codes, identifiers and data i.e. a reliable ‘source of truth’ for data relating with demand coming on stream for the following:
 - Devices/appliances: (unique identifier – GS1 GTINs (as per NHS) e.g. instrument trays, HIP replacements
 - Assets: – GS1 GTINs (as per NHS) e.g. it systems, hospital beds etc.
 - Cost Centres: – GS1 GLNs?

How is the Service Directory Information maintained?



- The information is maintained and updated by the Service Directory Data Quality Team (via a strict verification process) in conjunction with front line users (in hospitals in the main) who notify of information coming in on referral letters, radiology referrals etc.
- In addition there is some cross referencing with agencies who may have more current information available.
- There are a number of sources for the data held within the Service Directory and additional sources are being added as business need dictates.
- Some of this information is provided via automatic update files and interfaces while some information is updated on a case by case basis via the Service Directory web interface screens which is available on the HSE intranet.



How is the Service Directory information published and made available to consumers who need it?

The Service Directory is made available to consumers and systems via a number of channels or interface types as follows:

- 1. Web Browser
- 2. File Transfer
- 3. HL7 Messaging interface
- 4. Web Service (for future development)

Service Directory – Signposting Programme



- The current emphasis for development now relates to broadening out the scope from just Primary Care General Practice related information to include Hospital related services and more Primary Care related services.
- Major development work to commence on Services work-stream to capture all Services types and attributes
- As a proof of concept, services will be developed using:
 - ❖ Mental Health Services
 - ❖ Dementia Services
 - ❖ GP Out of Hours
- Collaborative work between Design Authority, Information Services, Health Identifiers and Signposting to design and agree a process for inclusion of other datasets to the Service Directory

What A2I is doing/and can do for HIDs



- Currently:
 - eReferrals
 - Authentication and Access Channel between GPs and Hospitals
- Soon:
 - ePrescribing
 - Authentication and Access Channel to National Systems such as NIMIS (Radiology), MN-CMS (Maternity) MedLIS (Labs), MOCIS (Oncology),
 - Access Channel between GPs and Pharmacies
 - Dissemination of IHI via all messaging



- Future:
 - Providing Healthmail addresses
 - Portal – Health Service Providers / Registration Authorities
 - Authentication (MyGov.ie) and Portal for Public access to IHI and consent register
 - Authentication and Access Channels for sources of information such as Dept.of Social Protection, Medical Council, Northern Ireland (cross border) HIQA, Health Service Provider Registration Authorities



- Currently:
 - Providing the IHI for eReferrals
 - Providing unique identifiers for Practitioners (and Medical Council registration status)
 - Providing unique identifiers for Organisations and locations (General Practices, Hospitals, Nursing Homes and Pharmacies, Health Centres)
 - Providing Standard National Codes and Data Sets for e.g. Hospital Acronyms, Standardised Names.
 - Eircodes / Geocoding
- Very Soon:
 - Providing Nurse (prescribing) identifiers for ePrescribing



■ Future:

- Providing Pharmacist Identifiers for ePrescribing
- Providing GP and GP Practice Identifiers for NI GPs (cross border)
- Providing Practitioner Identifiers
- Providing Organisation Identifiers (public and private)
- Providing a Consent register
- Providing a Client Identifiers Index – record locator service
- Providing EMPI functionality
- Providing back-office data quality functions



Future – Aligned to deliver

Access to:

- Integration
- Access Channels for sources and consumers
- Authentication
- Portals (public, health service providers)

Information:

- Health Identifiers
- Standard Natl. Values
- Eircodes / Geocoding
- EMPI
- CIIX – record locator service
- Back Office – Data Quality
- Consent Register